



*Commercial Wing*

**DEVELOPED BY**



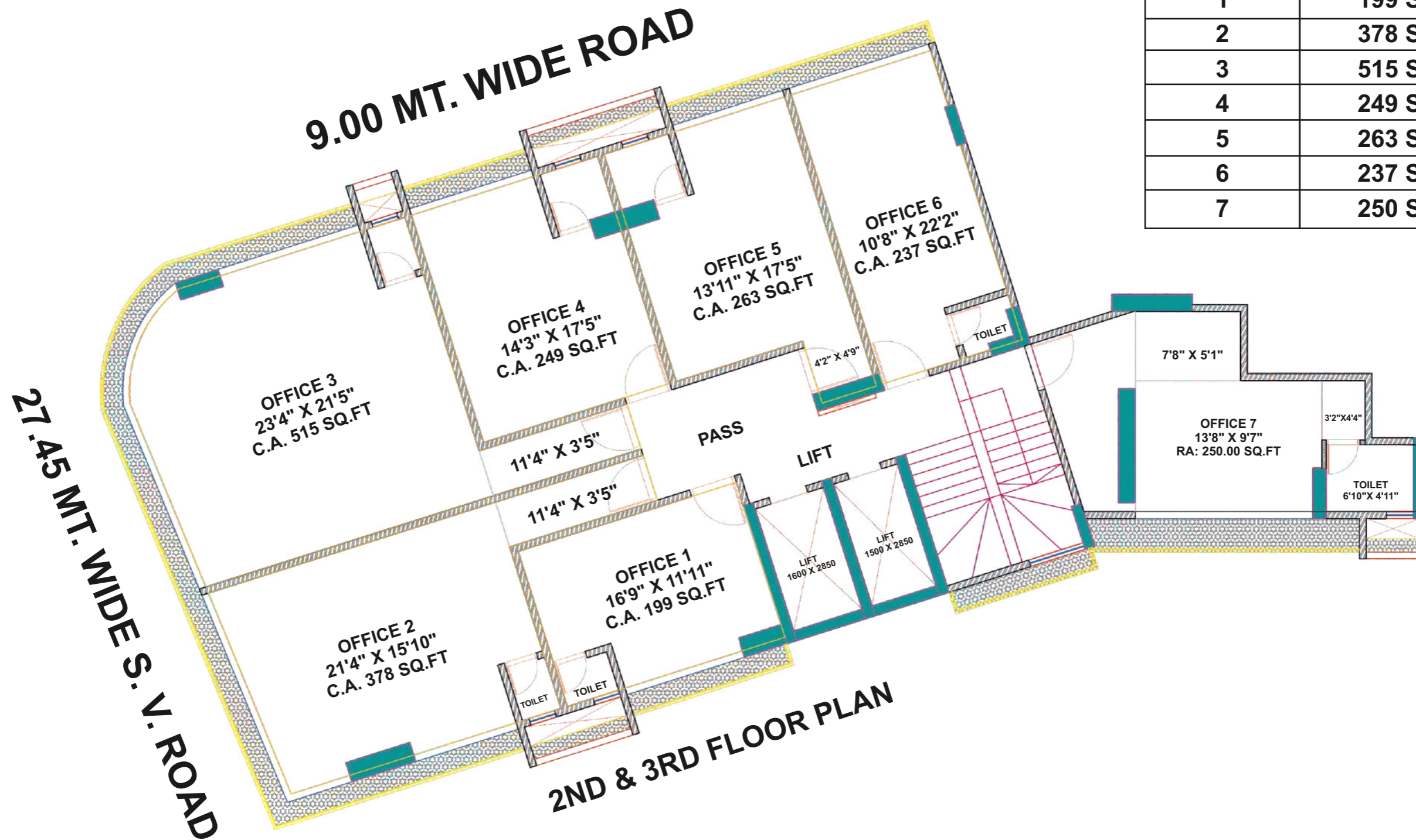
**V3 PARTNERS**  
BUILDING LIVES BUILDING TRUST

**COMMERCIAL**

- ★ Ground + 4 Floors (Separate Wing)
- ★ 2 Stretcher Lift / 11<sup>ft</sup> Clear Height

- ★ Self Contained & Customizable Office Units
- ★ From 200 sq.ft to 2000 sq.ft





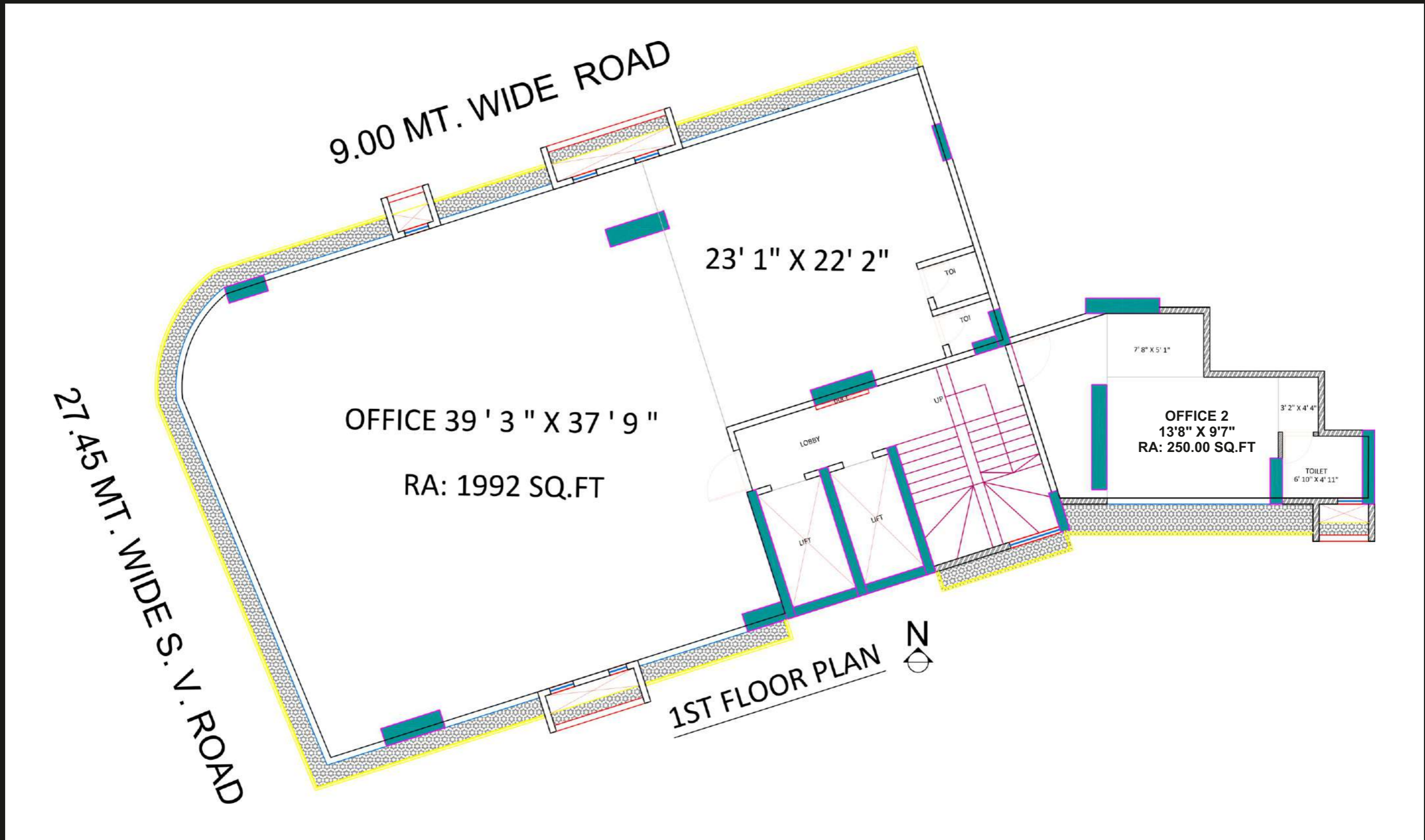
| UNIT NO. | CARPET AREA |
|----------|-------------|
| 1        | 199 Sq.ft   |
| 2        | 378 Sq.ft   |
| 3        | 515 Sq.ft   |
| 4        | 249 Sq.ft   |
| 5        | 263 Sq.ft   |
| 6        | 237 Sq.ft   |
| 7        | 250 Sq.ft   |

**IDEAL FOR**

★ Professionals  
 CA / Advocate/ Architects/ Back Office/ Realtors

★ Dentist  
 ★ Eye Clinic / Skin Clinic

★ Beauty Parlour  
 ★ Electronics Service Center



**IDEAL FOR**

- ★ NURSING HOME
- ★ JEWELERS

**Unit 1 - 1992 Sq.ft Carpet Area**

- ★ BANQUET
- ★ RESTAURANT

**Unit 2 - 301 Sq.ft Carpet Area**

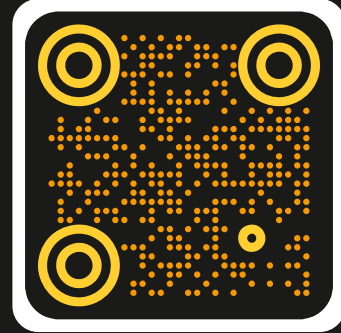
- ★ PLAY GROUP NURSERY
- ★ BANKS
- ★ CLASSES
- ★ GYM

## RERA NUMBER

P51800045822



## SCAN TO CONNECT



Available at <https://maharera.mahaonline.gov.in/>

## SITE ADDRESS

SHIV PARBAT, PARBAT NAGAR, S.V. ROAD,  
NR. MANAV KALYAN, DAHISAR EAST,  
MUMBAI - 400068



**V3 PARTNERS**  
BUILDING LIVES BUILDING TRUST

## FOR SALES INQUIRY

**SAGAR DEDHIA**

9819529711

**MITTAL**

7718862111

[www.v3partners.in](http://www.v3partners.in)